

Isle of Wight Volunteer Centre

The Isle of Wight Volunteer Centre is a one-stop shop for volunteers and the organisations who work with them.

We can help you develop new volunteering opportunities and provide support in matters concerning recruiting and managing your volunteers. We can help organisations to promote opportunities using the latest technology, both on our own website and through the national volunteering website do-it.org.uk. We also hold outreach sessions around the island and offer one to one appointments with potential volunteers.



Anyone can volunteer!

No matter what your age, gender, race, disability or experience you have something to offer. It doesn't matter how much time you've got either. Whilst some volunteers might give 2 or 3 days a week there are plenty of opportunities that involve giving only a couple of hours now and then. You may also want to volunteer for a one-off project.

Website: www.iwvolunteer.org.uk

Telephone: 01983 539377

Email: volunteer@iwrcc.org.uk

If you require this leaflet in an alternative format please contact the RCC Reception

Contacts and Staff

RCC reception:

Telephone: 01983 524058

Email: mail@iwrcc.org.uk

Web: www.iwrcc.org.uk

Opening Hours: 09:00 - 17:00 Monday to Thursday
09:00 - 16:00 Friday

Michael Bulpitt – Chief Executive

Email: michael.bulpitt@iwrcc.org.uk

Estelle Thomas – Community Support Manager

Email: estelle.thomas@iwrcc.org.uk

Sara Ellis – Health Inequalities Officer

Email: sara.ellis@iwrcc.org.uk

Helen Snashall – Volunteer Development Officer

Email: helen.snashall@iwrcc.org.uk

Claire Burton – VCS Development Officer: Children, Young People & Families

Email: claire.burton@iwrcc.org.uk

Graham Torr – Tendering Support Officer

Email: graham.torr@iwrcc.org.uk

Nigel Parrish – Information and Communications Officer

Email: nigel.parrish@iwrcc.org.uk

Janet Short – Resources Manager

Email: janet.short@iwrcc.org.uk

Optio Voluntary Car Service and WightBus Dial-a-bus Booking Service

Helpline number: 01983 522226

John Brownscombe – Rural Champion and Rural Research

Email: john.brownscombe@iwrcc.org.uk

David Langford – Rural Champion

Email: david.langford@iwrcc.org.uk

Sharon Packer – Rural Housing Enabler

Email: sharon.packer@iow.gov.uk

Community Chefs

Paul Rogers – Email: paul.rogers@iow.nhs.uk

Jenny Harris – Email: jenny.harris@iow.nhs.uk

Rural Health Trainer Service

Samantha Brooks – Email: sam.brooks@iwrcc.org.uk

Alice Cundall – Email: alice.cundall@iwrcc.org.uk

Elaine Garrett – Childhood Obesity Project Officer

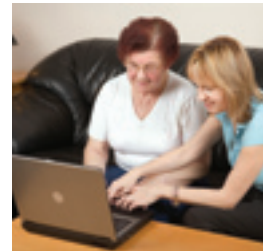
Email: elaine.garrett@iwrcc.org.uk

In post autumn 2008:

Rural Services Officer

Health and Well Being – VS support officer

CVS – Network Support Officer



The Island's Council for Voluntary Service
Registered charity No. 1063737
Company Limited by Guarantee Registration No. 3340032



**ISLE OF WIGHT
Rural Community Council**

Helping Communities Help Themselves



The Isle of Wight Rural Community Council exists to support the 1,500 or more voluntary and community organisations that work so hard for the benefit of the Island and its residents.

We are also here to directly support communities themselves and have a strong focus on rural community issues.



What we do as the Council for Voluntary Service - CVS

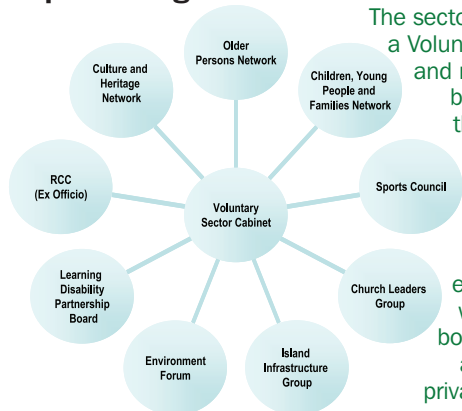
- Represent the views of the voluntary and community sector
- Provide information, advice and developmental support to local groups – including funding / governance / charity law
- Support bid writing and tendering for contracts
- Provide a Volunteer Centre
- Organise, promote and deliver training to support the sector
- Support the Voluntary Sector Cabinet and networks
- Support voluntary and community groups to understand and address the changing environment in which they work
- Highlight the value of the sector

E-news Service – ‘RCC News and Information Sheet’. A fortnightly e-bulletin, containing the latest news on funding, training and local events.

On-line Directory of Voluntary and Community Organisations – if you would like your organisation listed, please contact us.

Resource Library – to inform and support on good practice available at the RCC offices or from the iwrcc.org.uk website.

Representing the Sector



The sector on the Island has a Voluntary Sector Cabinet and networks supported by the RCC. Through this approach we try to ensure that the voice of the voluntary and community sector is heard and that effective partnership working takes place both within the sector and with public and private sector partners.

Who to contact?

E-news, Database, Networks - Nigel Parrish
Funding / Governance / Charity Law – Estelle Thomas
Children, Young People and Families CVS Support Officer – Claire Burton
Health and Well Being
CVS Support Officer – Starting autumn 2008
Tendering Support Officer – Graham Torr
Network Support Officer – Starting autumn 2008



Support to Rural Communities

Rural Champions

Our Rural Champions try to identify Island rural needs, listen to rural communities, find ways to solve issues and influence local strategies and plans.

‘Ask your Rural Champion’ is a service which allows people to raise issues, concerns and comments about the Island’s rural areas.

‘Rural Proofing’ is the term used to describe how we seek to ensure that local strategies and services take into account the needs of rural communities.



Increasing Rural Service Delivery

The IWRCC is committed to improving the range and quality of services available in rural areas and will be working with the public and voluntary sector partners and Town and Parish Councils to do just this.

We are in the process of recruiting a new Rural Services Officer to take on the development of the Community Advice Network, support rural Parish Councils to open offices and provide support to communities wishing to develop community shops.

Supporting Community Buildings

Community Buildings are a vital element of community life and we are committed to supporting their effective management and marketing. We are keen to support community building management committees make the most of their building and increase usage and will be working with them to improve management and marketing of their building.

Who to contact?

Rural Champion – David Langford
Rural Champion & Rural Research – John Brownscombe
Community Buildings – Estelle Thomas
Rural Housing Enabler – Sharon Packer
Rural Services Officer – Starting autumn 2008

Optio Voluntary Car service and Wightbus Dial-a-bus booking service

The RCC co-ordinates a network of volunteer drivers who give their time freely, using their own cars to provide a door to door service to enable housebound, elderly and frail residents who are unable to access transport, get to appointments and access services they need.

Wightbus Dial-a-bus provides a transport link to Newport for people with mobility difficulties on selected routes and set days.

Contact the Optio helpline on 522226 for full details about eligibility, costs and how to book a trip

Support for Healthy Communities

Health Inequalities Work

- The RCC co-ordinates the Isle of Wight Healthy Eating Alliance
- Supports community groups working with children and young people to develop food policies to help halt the rise of childhood obesity.
- Supports local community weight loss programmes
- Supports schools to achieve the National Healthy Schools Standard

Childhood Obesity

The RCC is delivering a project to help shape the future prevention and management of childhood obesity on the Island, a significant local issue.

Rural Health Trainer Service

Our Trainers provide easy access to health information and health services to adults over the age of 18 years and to provide individually tailored support to those who want to improve their health, well being and lifestyle.



IW Community Chefs Service

Our chefs increase awareness of healthy diets through teaching practical skills in food choice, food preparation and food hygiene.



Who to contact?

Health Inequalities – Sara Ellis
Health Trainers – Samantha Brooks and Alice Cundall
Childhood Obesity Project – Elaine Garrett
Community Chefs – Paul Rogers and Jenny Harris